

Calorifer port prosop din oțel cu elemente orizontale din țeavă dreptunghiulară, Quadré vine de la un apel contemporan la stilul tradiției. Un radiator care, datorită cadrului dreptunghiular particular, întruchipează toate caracteristicile tehnice și formale ale radiatorului de baie.



Quadré, înălțimea 1517 mm, lățime 600 mm, Alb Standard

Caracteristici Tehnice

calorifer port prosop din oțel cu elemente orizontale din țeavă dreptunghiulară
elemente orizontale tubulare cu secțiune dreptunghiulară 25x20 mm
colectoare laterale cu secțiune de 30x30 mm
filetarea extremității colectorului și racordări centrale (50 mm), primul tub inferior 1/2" Gas dreapta
presiunea maximă admisă de 4 bar
temperatura maximă admisă de 95°C

Standard equipment

fixarea pe perete
aerisitor

Certifications



Plus



Date tehnice

Model	Depth (mm)	Height (mm)	Width (mm)	Conn. C. (mm)	Weight (kg)	Capacity (lt)	$\Delta t=60^{\circ}\text{C}$ (Watt)	$\Delta t=50^{\circ}\text{C}$ (Watt)	$\Delta t=40^{\circ}\text{C}$ (Watt)	$\Delta t=30^{\circ}\text{C}$ (Watt)	$\Delta t=20^{\circ}\text{C}$ (Watt)	Exponent
01												
872 18 țevi 1 spațiu	42,0	872	400	370	7,30	3,80	435,0	348,0	265,0	186,0	113,0	1,224
872 18 țevi 1 spațiu	42,0	872	500	470	8,60	4,50	535,0	428,0	326,0	229,0	139,0	1,225
872 18 țevi 1 spațiu	42,0	872	600	570	9,90	5,30	636,0	509,0	387,0	272,0	166,0	1,226
872 18 țevi 1 spațiu	42,0	872	750	720	11,90	6,40	787,0	629,0	478,0	336,0	204,0	1,227
1216 24 țevi 2 spații	42,0	1216	400	370	9,80	5,00	594,0	475,0	361,0	254,0	154,0	1,227
1216 24 țevi 2 spații	42,0	1216	500	470	11,60	6,00	725,0	580,0	441,0	310,0	189,0	1,226
1216 24 țevi 2 spații	42,0	1216	600	570	13,30	6,90	856,0	685,0	521,0	366,0	223,0	1,225
1216 24 țevi 2 spații	42,0	1216	750	720	15,90	8,30	1.054,0	843,0	642,0	451,0	275,0	1,224
1517 29 țevi 3 spații	42,0	1517	400	370	12,00	6,10	764,0	611,0	464,0	326,0	198,0	1,229
1517 29 țevi 3 spații	42,0	1517	500	470	14,10	7,30	931,0	744,0	566,0	397,0	241,0	1,229
1517 29 țevi 3 spații	42,0	1517	600	570	16,20	8,40	1.097,0	877,0	667,0	468,0	284,0	1,229
1517 29 țevi 3 spații	42,0	1517	750	720	19,40	10,10	1.348,0	1.077,0	819,0	575,0	349,0	1,230
1818 36 țevi 3 spații	42,0	1818	400	370	14,70	7,80	884,0	707,0	538,0	378,0	229,0	1,228
1818 36 țevi 3 spații	42,0	1818	500	470	17,30	9,30	1.080,0	863,0	656,0	460,0	280,0	1,230
1818 36 țevi 3 spații	42,0	1818	600	570	20,00	10,80	1.276,0	1.019,0	774,0	543,0	330,0	1,232

1818 36 țevi 3 spații	42,0	1818	750	720	23,90	13,00	1.571,0	1.254,0	952,0	667,0	405,0	1,235
05												
872 18 țevi 1 spațiu	42,0	872	400	50	7,30	3,80	435,0	348,0	265,0	186,0	113,0	1,224
872 18 țevi 1 spațiu	42,0	872	500	50	8,60	4,50	535,0	428,0	326,0	229,0	139,0	1,225
872 18 țevi 1 spațiu	42,0	872	600	50	9,90	5,30	636,0	509,0	387,0	272,0	166,0	1,226
872 18 țevi 1 spațiu	42,0	872	750	50	11,90	6,40	787,0	629,0	478,0	336,0	204,0	1,227
1216 24 țevi 2 spații	42,0	1216	400	50	9,80	5,00	594,0	475,0	361,0	254,0	154,0	1,227
1216 24 țevi 2 spații	42,0	1216	500	50	11,60	6,00	725,0	580,0	441,0	310,0	189,0	1,226
1216 24 țevi 2 spații	42,0	1216	600	50	13,30	6,90	856,0	685,0	521,0	366,0	223,0	1,225
1216 24 țevi 2 spații	42,0	1216	750	50	15,90	8,30	1.054,0	843,0	642,0	451,0	275,0	1,224
1517 29 țevi 3 spații	42,0	1517	400	50	12,00	6,10	764,0	611,0	464,0	326,0	198,0	1,229
1517 29 țevi 3 spații	42,0	1517	500	50	14,10	7,30	931,0	744,0	566,0	397,0	241,0	1,229
1517 29 țevi 3 spații	42,0	1517	600	50	16,20	8,40	1.097,0	877,0	667,0	468,0	284,0	1,229
1517 29 țevi 3 spații	42,0	1517	750	50	19,40	10,10	1.348,0	1.077,0	819,0	575,0	349,0	1,230
1818 36 țevi 3 spații	42,0	1818	400	50	14,70	7,80	884,0	707,0	538,0	378,0	229,0	1,228
1818 36 țevi 3 spații	42,0	1818	500	50	17,30	9,30	1.080,0	863,0	656,0	460,0	280,0	1,230
1818 36 țevi 3 spații	42,0	1818	600	50	20,00	10,80	1.276,0	1.019,0	774,0	543,0	330,0	1,232
1818 36 țevi 3 spații	42,0	1818	750	50	23,90	13,00	1.571,0	1.254,0	952,0	667,0	405,0	1,235

(*). Grație prestațiilor ridicate ale corpurilor încălzitoare Irsap Quadré, se consideră ideale pentru proiectarea la joasă temperatură un Δt la 30°C

Pentru $\Delta t \neq$ de 60°C utilizați formula: $Q=Q_n (\Delta t / 60)^n$

Standard equipment

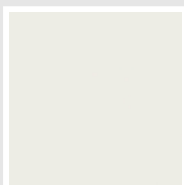
- fixarea pe perete
- aerisitor

Packing

Atenția pe care Irsap o rezervă fiecărui calorifer se manifestă și în grija pentru ambalaj. Fiecare produs este protejat de un material antișoc care previne zgârieturile și deteriorările accidentale pe parcursul transportului sau a manipulării pe șantier. Toate ambalajele trebuie colectate și reciclate conform legislației în vigoare.

Colori e finisaje

CLASSIC



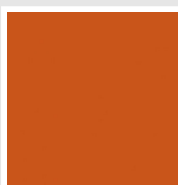
Bianco Edelweiss
Cod. 34



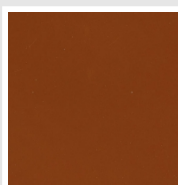
Beige Cream
Cod. 26



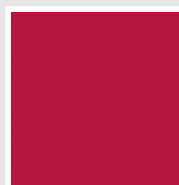
Giallo Melone - RAL
1028
Cod. E7



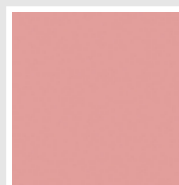
Arancio - RAL 2004
Cod. 17



Marrone Ruggine -
RAL 8004
Cod. E1



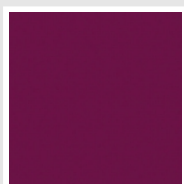
Rosso Fragola - RAL
3018
Cod. Y3



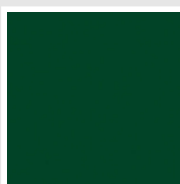
Rosa - RAL 3015
Cod. R2



Lilla Bluastro - RAL
4005
Cod. R3



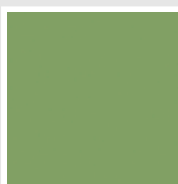
Porpora Traffico -
RAL 4006
Cod. R6



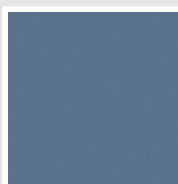
Verde Bosco - RAL
6005
Cod. 19



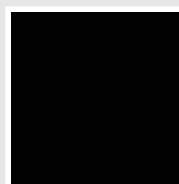
Verde Erba - RAL
6018
Cod. N3



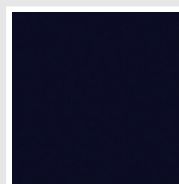
Verde Salvia - RAL
6021
Cod. E6



Blu Pastello - RAL
5024
Cod. G7

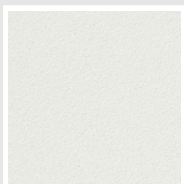


Nero - RAL 9005
Cod. 10

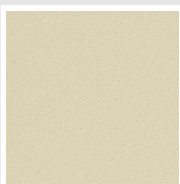


Deep Blue
Cod. 2F

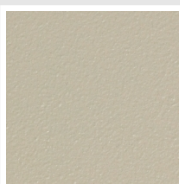
SPECIAL



Bianco Perla
Cod. 16



Quartz 1
Cod. 1C



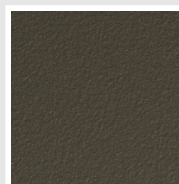
Sablé
Cod. Y4



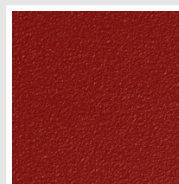
Quartz 2
Cod. 2C



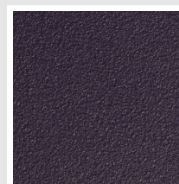
Sunstone
Cod. 2D



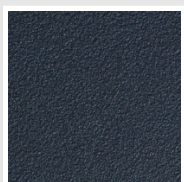
Bruno Tabacco
Cod. 1B



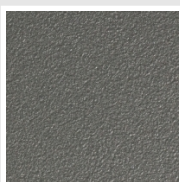
Flame Red
Cod. 7D



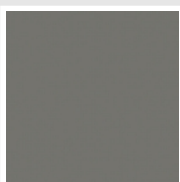
Purple Blue
Cod. 1D



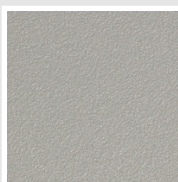
Azurite 3
Cod. 6C



Grigio Medio
Cod. 4D



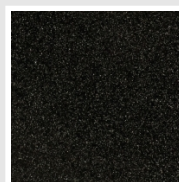
Grigio Titanio
Metallizzato - RAL
9023
Cod. L3



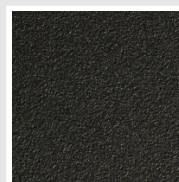
Grigio Perla
Cod. L6



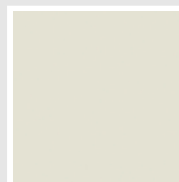
Nero Grafite
Cod. 18



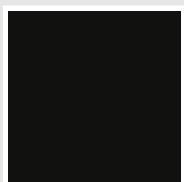
Grigio Quarzo
Cod. 31



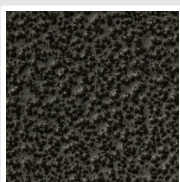
Nero Satinato
Cod. 30



Bianco Opaco
Cod. J8



Nero Opaco
Cod. K1



Grigio Martellato
Cod. 32



Rame Martellato
Cod. J4

SURFACES



Trattamento Loft
Cod. TR

The Colors used in this folder are not considered binding. The different technological painting processes and the materials used for the realization can not have a perfect color match with the delivered product. Irsap company reserves the right to introduce at any time whatever modifications necessary to the improvement of the product.